

THIS IS TO CERTIFY THAT THIS IS THE OFFICIAL ZONING MAP OF CUMRU TOWNSHIP, AS ADOPTED BY THE CUMRU TOWNSHIP BOARD OF COMMISSIONERS ON _____, 2021, AS PART OF THE CUMRU TOWNSHIP ZONING ORDINANCE OF 2009.

PRESIDENT

COMMISSIONER

VICE PRESIDENT

COMMISSIONER

ATTEST:

COMMISSIONER

CUMRU TOWNSHIP SECRETARY

ZONING DISTRICTS

- AG — AGRICULTURAL
- RC — RURAL CONSERVATION
- LR — LOW DENSITY RESIDENTIAL
- MR — MEDIUM DENSITY RESIDENTIAL
- HR — HIGH DENSITY RESIDENTIAL
- LC — LOCAL COMMERCIAL
- HC — HIGHWAY COMMERCIAL
- OC — OFFICE COMMERCIAL
- GI — GENERAL INDUSTRIAL
- MUGC — MIXED USE/ GENERAL COMMERCIAL

Legend

Zoning Districts

AG

RC

LR

MR

HR

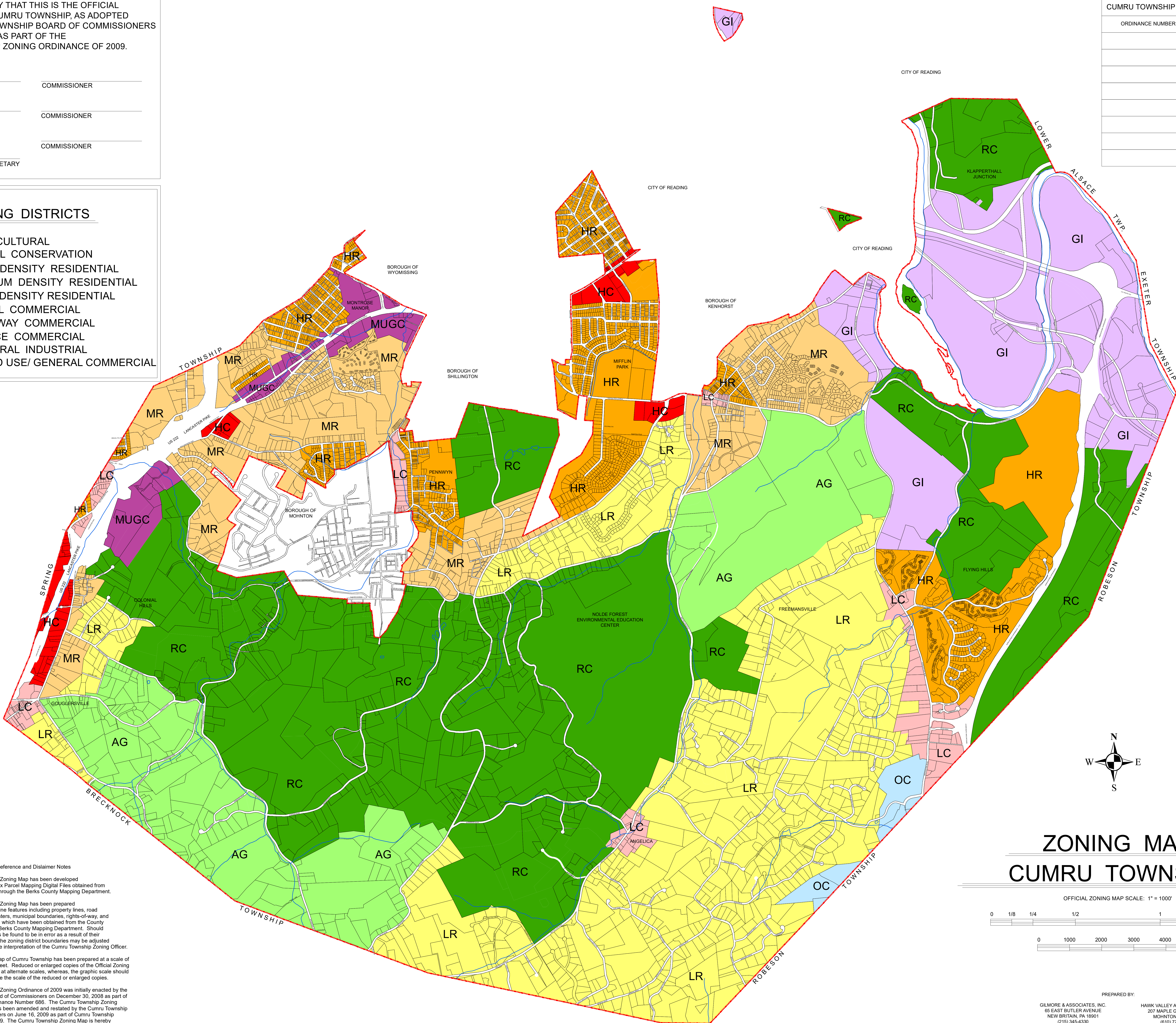
LC

HC

OC

GI

MUGC



CUMRU TOWNSHIP ZONING MAP REVISIONS	
ORDINANCE NUMBER	DATE ENACTED

Official Zoning Map Reference and Disclaimer Notes

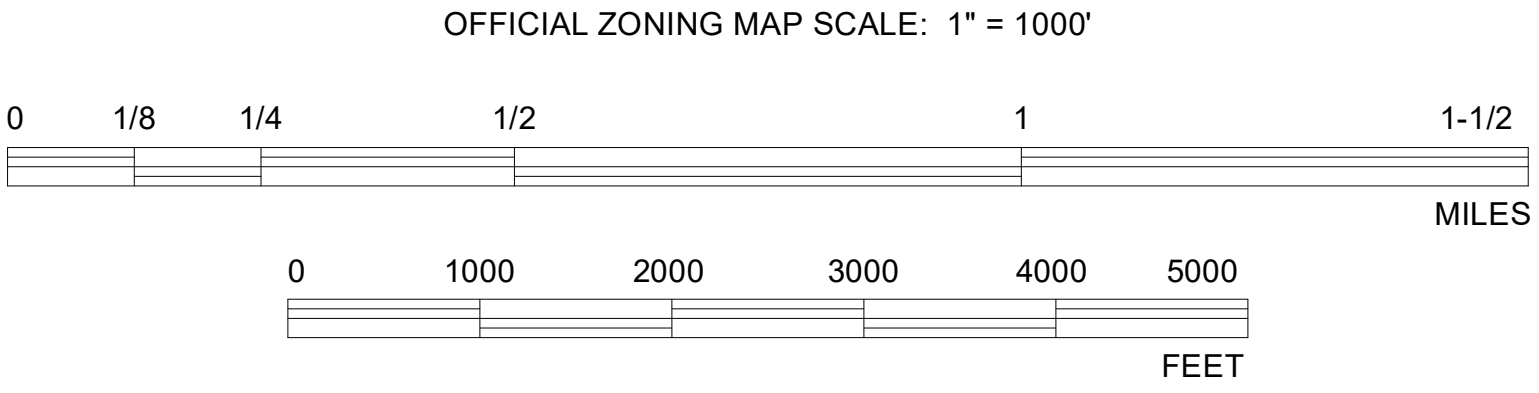
Note 1: The Cumru Township Zoning Map has been developed from Berks County Tax Parcel Mapping Digital Files obtained from the County of Berks through the Berks County Mapping Department.

Note 2: The Cumru Township Zoning Map has been prepared utilizing known base line features including property lines, road segments, surface waters, municipal boundaries, rights-of-way, and other similar features, which have been obtained from the County of Berks through the Berks County Mapping Department. Should any base line features be found to be in error as a result of their location, the limits of the zoning district boundaries may be adjusted accordingly, as per the interpretation of the Cumru Township Zoning Officer.

Note 3: The Official Zoning Map of Cumru Township has been prepared at a scale of 1 inch equaling 1000 feet. Reduced or enlarged copies of the Official Zoning Map may be prepared at alternate scales, whereas, the graphic scale should be utilized to determine the scale of the reduced or enlarged copies.

Note 4: The Cumru Township Zoning Ordinance of 2009 was initially enacted by the Cumru Township Board of Commissioners on December 30, 2008 as part of Cumru Township Ordinance Number 686. The Cumru Township Zoning Ordinance of 2009 has been amended and restated by the Cumru Township Board of Commissioners on June 16, 2009 as part of Cumru Township Ordinance Number 689. The Cumru Township Zoning Map is hereby incorporated as part of the Cumru Township Zoning Ordinance of 2009.

ZONING MAP
CUMRU TOWNSHIP



PREPARED BY:

GILMORE & ASSOCIATES, INC.
65 EAST BUTLER AVENUE
NEW BRITAIN, PA 18901
(215) 345-4330

HAWK VALLEY ASSOCIATES, PC
207 MAPLE GROVE ROAD
MOHNTON, PA 18640
(610) 775-7392